



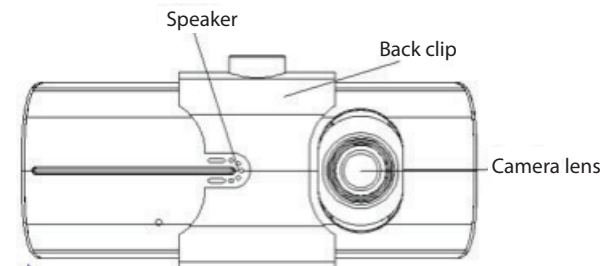
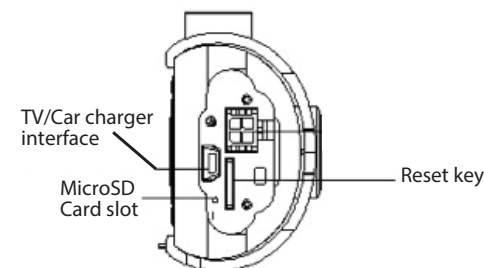
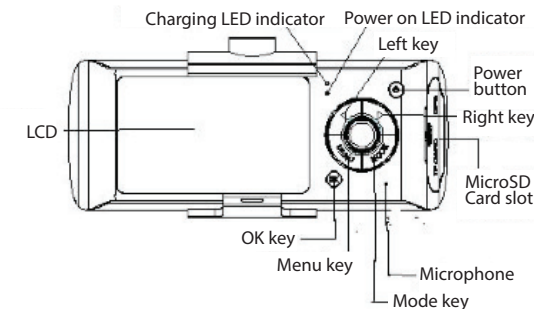
Enjoy it.

BPDV142

Table of Contents

Product Overview	3
Using the Dual Camera	
Changing the battery	4
Inserting a memory card	4
Adjusting the position of the lens	4
Turning the DashCam on/off	5
Basic Operations	
Switching between operating modes	5
Navigating the menu	5
System setting	5
How to shoot	5
Start / Stop shooting	5
Open / Close audio	5
Video playback and file management	6
Video playback	6
Computer access to the DashCam file	6
Reset the DashCam	8
Technical Specifications	8

Product Overview



Using the Dual Camera

Charging the battery:

There are two methods for battery charging.

1. Use the USB cable to connect the DashCam to a computer for charging.
2. Use the included vehicle adapter power source for charging.

When the DashCam is charging, the red indicator light turn on. When it is finished charging, the indicator light will automatically turn off. The whole charging process takes approximately 4 hours.

NOTE: In the event that your vehicle loses power, the reserve battery will save files and record data.

Inserting a memory card

Insert a MicroSD card into the card slot. The MicroSD card will be secured into the slot when you hear a "click".

The DashCam supports 4GB to 32GB MicroDS Card.

Formatting a memory card

The first time you a memory card, the DashCam will ask you to format the MicroSD card. Select "Yes" to allow the DashCam to format the memory card and install the required software needed for viewing DashCam videos on your computer. The software only works with PC computers.

Note: Before you format the memory card, make sure you have backed up any important files. Formating the memory card will erase any saved files.

To remove, push the MicroSD card inside and the card will pop up.

Adjusting the positons of the lens

You can adjust the front lens of the DashCam by 20° upwards or downwards for better viewing and recording angle.

Turning the DashCam on/off

Turn On: Press and hold the power button until red on indicator lights up.
Turn Off: Press and hold the power button until red off indicator shuts off.

Notice: When the DashCam has low battery, it will prompt automatic shutdown.

Basic Operations

Switching between operating modes

This device has two operating modes: Video Mode and Playback Mode
press the mode Key to change between them.

System Settings: The following settings can be found in the Menu Screen.

Video Mode: Select which lens to allow video recording.
Time Setup: Press the left/right key to adjust the date and time. Press the OK key to confirm and exit.
Format: Press the OK key to enter and Select Yes/ No.
Selecting “Yes” will erase the memory card and format it for the DashCam.
TV Out: Select NTSC/PAL setting.
Beep: Turn On/Off beep noise when pressing DashCam buttons.
Audio Record: On/Off
Language: English / German / Russian / Traditional Chinese / Simplified Chinese / Japanese.
LCD Default: On/Off.
G-SENSOR Sensitivity: Adjust G-Sensor detection settings. (This function automatically starts during video recording).
Frequency: 50HZ / 60HZ.
Vibration detection: On/Off
Default Setting: Reset the default setting to your current setting.
In the shooting mode, press OK key to start shooting, then press OK key again to stop shooting.

When the DashCam is on or a MicroSD card is inserted, it will automatically start shooting.
Open / Close audio:
During video recording process, pressing left key can fast open / close audio in the video.

How to shoot

Start / Stop shooting:
In the shooting mode, press OK key to start shooting, then press OK key again to stop shooting.
When the DashCam is on or a MicroSD card is inserted, it will automatically start shooting.

During video recording process, pressing left key can fast open / close audio in the video.

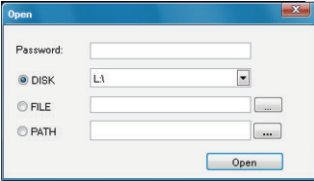
Video playback and file management

Press the MODE key to enter playback mode and the screen will show the playback picture of the last video file.
Video playback:
Press the left and right keys to select audio and video files need playback.
Press OK key for play and pause of the video file.

Computer access to the DashCam file

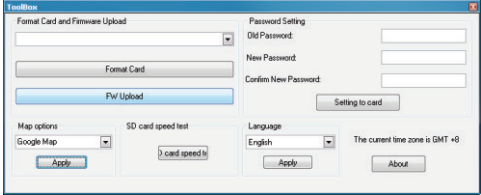
This DashCam does not support USB protocol. Accessing the files required a SD card reader or adapter.
When you first insert a MicroSD card and complete forming for the first time, the DashCam will automatically generate specialized software tool (ADR Player) on the memory card. Accessing the DashCam files can only be accessed via this tool.

Notice:
(1) For ease of use we recommend installing the software on your PC.
(2) The software is only compatible with Windows.
Using ADR Player (X2Player) software.
1. Use a card reader to read video information on the MicroSD card.
In the SD card disk the user can see three files: ap.bin, Default_Folder.ini and ADR Player (X2Player)
2. Run ADR Player (X2Player).
3. Open the player to play video documents.
Click to open the player.



Select MicroSD Card disk path, then click the “apply” to load and automatically play the document in the card.
Clicking the << >> <> <> <> <> ActiveX can control playback: slow motion / stop / play (pause) / fast forward.
4. Select double lens channel:
Clicking the <> <> <> <> Selects dual camera playback: dual camera / front camera / back camera.

5. Video on file:
Select a video file to save and click to pop up the saving options. After selecting, click “sure” to save the selected file.
6. Photo on file:
Select a photo to save and click to pop up saving options. After selecting, click "save".
7. Delete a file:
Select the video file not needed and click . The options “sure/ cancel” will display, select “Sure” to delete the selected video file.
8. ToolBox:
ToolBox Functions: SD card formatting / upload software to the SD card / SD card speed test / map selection and user password setting.
Click to enter.



10. Gravity sensor:
Click , to view gravity sensor data while the video plays to trace accident and abnormal circumstance occurring during the driving process.
11. Other operations:
Click for the following functions: repair film / unlock protection / choose to display size.

Reset the DashCam

When abnormal circumstance occur due to improper operation, you can press reset button to restart the DashCam.

Technical Specifications

LCD screen size	2.7” (16: 9)
Lens	Front lens with ultra wide angle of 140°; back lens with ultra wide-angle of 100°.
Optional language	English / German / Russian / Traditional Chinese / Simplified Chinese / Japanese.
Video format	AVI
Memory card slot	MicroSD
Microphone/ Speaker	Built-in
Television Output	NTSC/PAL
DC access	DC 5V
Battery	Built-in lithium polymer battery
System requirement	Windows 2000/XP/Vista/ Windows 7/8/10

Note: we reserve the modification right of the machine design and specifications without notice.

©2017 Blaupunkt. Windows is a trademark of Microsoft. Google Maps is a trademark of Google. Blaupunkt is not affiliated with Microsoft or Google.