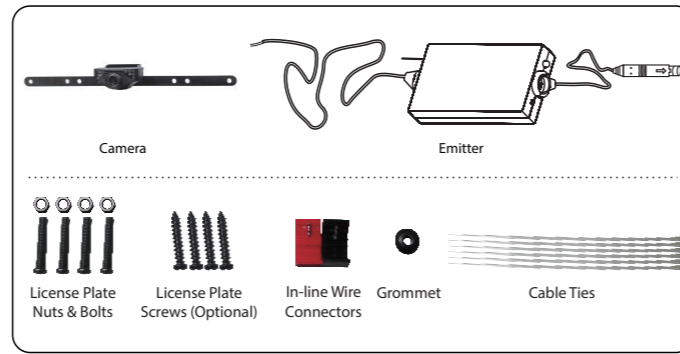


**2.4GHz Digital Wireless Car Rearview System**



*Enjoy it.*

**Packing List**



**Specifications**

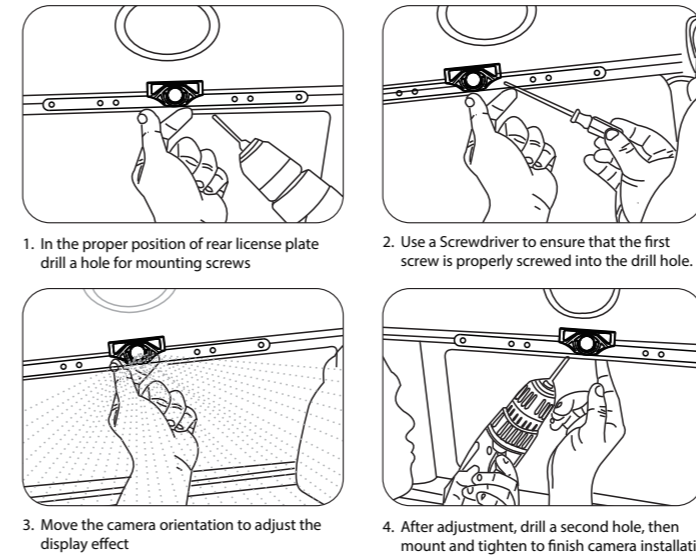
WIFI car rear view	
Items	GL8912
Power Supply	12V DC
Consumption Current	150mA MAX
Video output	0.9~1.2Vp-p 75Ω
Night Vision Range	>3m
Image Sensor	1/4inch CMOS
Effective Pixels	640x480 pixels
Video Format	NTSC/PAL
Electronic Exposure Time	1/60s~12ns(NTSC) sec 1/50s~12.5ns(PAL) sec
Minimum illumination	<5 Lux
Horizontal View Angle	80°
Operation Temperature	-10~+50°C
Storage Temperature	-20~+60°C
Operation Humidity	15%~85%RH
Dimensions	370 X 55 X 35MM
Weight	140g

WIFI transmitter box	
Items	GT4068
Operation Voltage	12V DC
Operation Current	150mA(MAX)
Operation Frequency	2400-2483.5MHz
Wireless Protocol	IEEE 802.11b, IEEE 802.11g, IEEE 802.n (1T1R Modes)
Encryption Mode	WPA2
Modulation Mode	802.11b : DSSS (CCK, DQPSK, DBPSK)+802.11g : OFDM (BPSK, QPSK, 16QAM, 64QAM)
Transmission Distance With No Obstacle	≥ 10m
Weight	60±5g
Dimensions	71 X 35.5 X 12.3MM
Operation Temperature	-10~+50°C
Storage Temperature	-20~+60°C
Operation Humidity	20%~90%RH

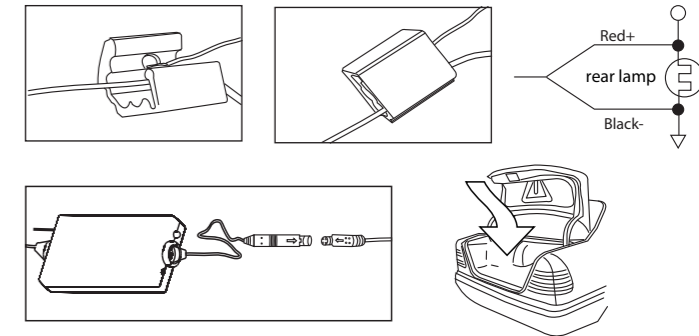
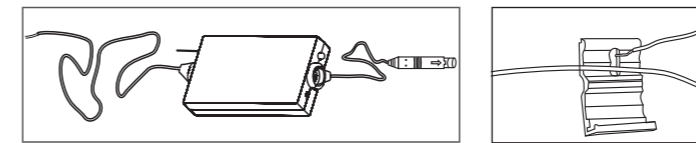
\* All the specifications are subject to minor change without prior notice

**Installation**

**Installation instructions for the camera:**



**Installation instructions for the emitter:**



When the camera is fixed, put the lead-wire of the camera through the car trunk.

**Notice**

- \* The positive and negative pole of the emitter box's power cable are connected to the positive and negative pole of the rear lamp of the car.
- \* Never reverse the positive and negative pole. Reversing the poles can damage the emitter box and camera, rendering them unusable.
- \* The antenna of the emitter box should not be placed near any metal part of the car. This can negatively affect the emitting distance and image transmission.

**Operations for Android system client**

**❖ Installation app Software**

1. Turn on the Android Phone and enter the Google Play Store
2. Search "Sight Wifi" app.
3. Install the "Sight Wifi" app

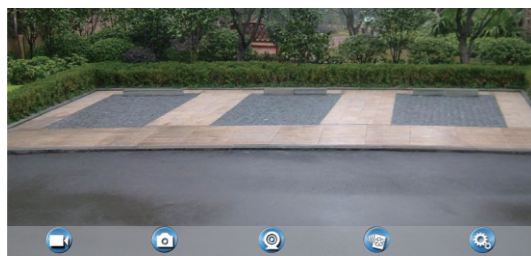
**❖ Connection WiFi:**

1. Click on the "Settings" icon.
2. Click on "Wi-Fi", then select the camera to connect too. The initial SSID of the device is "WIFICAMERA". Then type in the password of the devices (Default password: 88888888).



**❖ View the video:**

Open the APP, if the connection between the wifi tool and the mobile device is successful the app will be highlighted. Then the image would be transmitted from the camera to the app. As shown in the figure below, the camera is showing real-time monitoring in the app. The user would also be able to press the "Settings" icon to refresh the image



**Notice**

- \* When set WiFi signal to connect the mobile phone, please close the WiFi signal previously opened.
- \* image display time is relate to the CPU, memory, software version, working software number of mobile phone.
- \* when the background is black or the image is still, please exit the APP, and check whether the wifi connection is normal. then click again the APP icon to enter into the software interface.

**❖ Settings:**

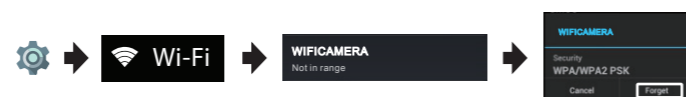
Press this "Settings" icon to enter into the settings menu you can change the default factory SSID and password of the wifi camera tool, and clicking "Save" will show whether the change is successful, and clicking "Cancel" to cancel the new SSID set.



**Notice**

- \* User could press the RESET button of the emitter to renew the default factory SSID and password.
- \* When the user changes the SSID and password, the user shall forget the network in the "Settings", and then reconnect the new network. Otherwise login error will remain displayed.

The specific steps to clear network memory are as follows, and then follow the above WiFi connection method to reconnect the new network.



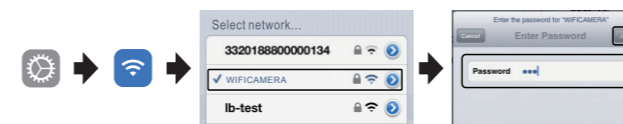
**Operations for iOS Apple system client**

**❖ Installation app Software**

1. Turn on the iOS device and enter the App Store
2. Search "Sight Wifi" app.
3. Install the Sight Wifi app

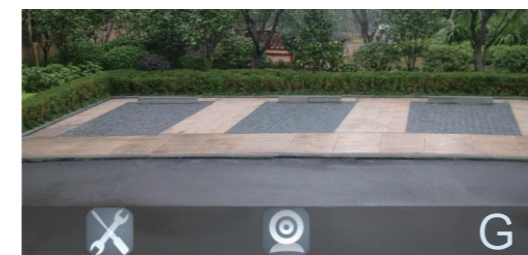
**❖ Connection WiFi:**

1. Click on the "Settings" icon in the main interface of the iOS device.
2. Click on "Wi-Fi", then select the camera to connect too. The initial SSID of the device is "WIFICAMERA". Then type in the password of the devices (Default password: 88888888).



**❖ View the video:**

Open the APP, if the connection between the wifi tool and the mobile device is successful the app will be highlighted. Then the image would be transmitted from the camera to the app. As shown in the figure below, the camera is showing real-time monitoring in the app. The user would also be able to press the "Settings" icon to refresh the image



**Notice**

- \* When set WiFi signal to connect the mobile phone, please close the WiFi signal previously opened.
- \* image display time is relate to the CPU, memory, software version, working software number of mobile phone.
- \* when the background is black or the image is still, please exit the APP, and check whether the wifi connection is normal. then click again the APP icon to enter into the software interface.

**❖ Settings:**

Press this "Settings" icon to enter into the settings menu. You can change the default factory SSID and password of the wifi camera tool, and clicking "Save" will show whether the change is successful, and clicking "Cancel" to cancel the new SSID set.



**Notice**

- \* User could press the RESET button of the emitter to renew the default factory SSID and password.
- \* When the user changes the SSID and password, the user shall forget the network in the "Settings", and then reconnect the new network. Otherwise login error will remain displayed.

The specific steps to clear network memory are as follows, and then follow the above WiFi connection method to reconnect the new network.

