

BLAUPUNKT

TIRE PRESSURE
MONITORING SYSTEM
TPMS 1.0



Enjoy it.

SPECIFICATION

Sensor

Operating frequency	433.92MHz
Battery voltage	1.8V ~ 3.3V
Battery lifetime	1-year
Operating temperature	-20°C ~ 60°C
Pressure range	0~3.5 Bar / 0~50 PSI

Display

Operating frequency	433.92MHz
Operating voltage	12 +/- 3V
Operating temperature	-20°C ~ 70°C

Default value

High pressure value	3.0 Bar / 43 PSI
Low pressure value	1.8 Bar / 26 PSI
High temperature value	68°C ~ 80°C

Precision

Temperature	+/-2°C
Pressure	0.1 Bar / 1.5 PSI

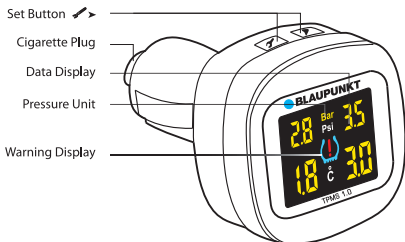
Air pressure unit

1 Bar = 14.5 PSI = 100 Kpa = 1.02Kgf/cm2

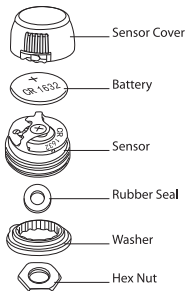
Accessories



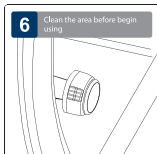
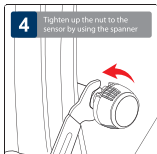
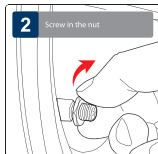
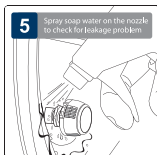
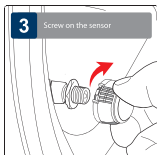
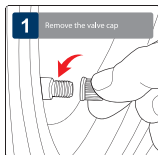
DISPLAY



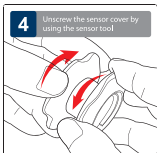
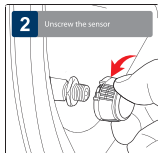
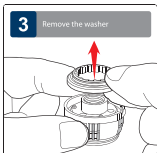
SENSOR



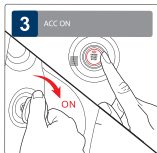
SENSOR INSTALLATION



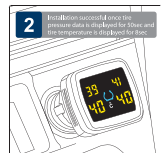
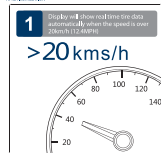
SENSOR BATTERY REPLACEMENT



DISPLAY INSTALLATION



FUNCTIONAL TEST



DIFFERENT SCENARIO



SETTING

HIGH PRESSURE VALUE SETTING



LOW PRESSURE VALUE SETTING

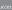


HIGH TEMPERATURE VALUE SETTING



UNIT SWITCHING



You will hear the sound  to indicate that unit switching successful.







RESET SETTING



SETTING

SENSOR PAIRING

Sensor pairing are required only when the tires or the sensors has switched location or be replaced

<p>1 Press "Pair" and "Enter" simultaneously for at least 5 seconds to enter into pairing mode. Pairing order: Left front → Right front → Left Rear → Right Rear.</p> 	<p>4 When system receives the signal, you will hear "D-D-D-D" which indicates successful sensor pairing.</p> 
<p>2 Left hand tire icon began to flash.</p> 	<p>5 Every time display flashes the next location, repeat steps 1-4 to pair the rest of the sensors.</p> 
<p>3 Inserted each get the sensor to learn the code and wait for 40 seconds.</p> 	<p>6 After the left tire (right) is paired with the sensor, the display will return to the original interface.</p> 

TROUBLESHOOTING

1. Air leakage after sensor installation

The tire valves may not be universal standard, please check with the local workshop.

2. No tire data are displayed after completing installation

Ensure ACC is turned on.

3. Missing/lost sensor

Please purchase new sensor.

4. Sensor battery low

Please replace with battery CR1632.

5. Change of tire location

Please reprogram the corresponding sensors.

Note

1. TPMS (Tire Pressure Monitoring System) is designed for monitoring tire irregularities. Drive has responsibility to maintain tires regularly.
2. Driver should react promptly once warning from this unit alerted.
3. Blaupunkt does not guarantee or assumes liability for the loss of sensors.
4. All sensors in this unit have been pre-set individually for each tire in the factory.
5. Whenever the location of tire changed, the sensor must be reprogrammed.
6. The display will turn off whenever the car is turned off.

