

● BLAUPUNKT

BLAUPUNKT
Brand
established
1924
GERMANY

VEHICLE
TRACKING SYSTEM
GT100



Enjoy it.

Operating and Installation Instructions

CAUTIONS

Safety Notes

This device has been manufactured according to established safety guidelines. However, dangers may still occur if the safety notes in this manual is not observed. This manual is intended to familiarize the user with the device's important functions. Read this carefully, prior to using the device. Keep this manual in an easily accessible location. In addition, do observe the instructions of the devices used in conjunction with this device.

Attentions

- This device is intended for installation and operation in a vehicle with 12V and 24V vehicle system voltage.
 - Keep the device away from children.
 - Keep the device away from flammable areas or liquids.
 - The device should be stored in dry and low humidity place.
 - Ensure the car battery is fully charged.
 - Weak signal or signal interference of device can arise from obstacle locations such as underground parking.
- For abnormalities, please refer to the "Troubleshooting" section. Consult with Blaupunkt dealer for further assistance, in case if the problem cannot be resolved.

This manual may be updated from time to time without any notice. Visit www.blaupunkt.com/ase for latest info.

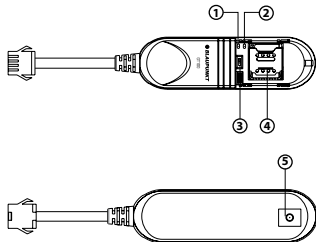
Disclaimer

In no event shall Blaupunkt be liable for any direct, indirect, punitive, incidental, special consequential damages to property or life and whatsoever arising out of or connected with the use or misuse of our products.

USA & CANADA: This product is not intended for sale in the United States and Canada. If purchased in the U.S. or Canada, this product is purchased on as-is basis. No warranty, whether expressed or implied is provided in the U.S. or Canada.

Blaupunkt does not warrant the performance of the local telecommunication network used with our product. It is recommended to test for network compatibility prior to purchase.

STRUCTURE & FUNCTIONS



Functions

1. Indicator light of GSM
2. Indicator light of GPS
3. Switch (On/Off)
4. SIM card slot
5. Light sensor for theft prevention

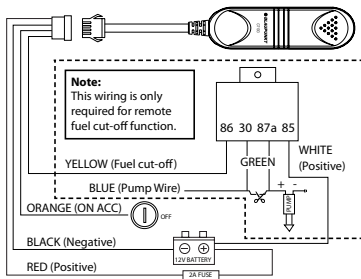
SPECIFICATIONS

- Operating Voltage : DC 9V-36V
- Current : 10mA
- Navigation System : GPS
- Location Accuracy : Up to 10 meters
- GSM Frequency : 850/900/1800/1900MHz
- Internet Protocol : TCP
- Working Temperature : -25°C ~ +75°C
- Storage Temperature : -40°C ~ +85°C
- Standby Battery : 0.5 Hours
- Dimension (LxWxH) : 78.5x23x12mm

FUNCTION LIST OF THE DEVICE

Functions	Details	Description
Vehicle Status Detection	Acc On/ Off	Uploaded data include the Acc On/ Off status each time in dynamic view.
Alarm Notification	External Power Disconnection	When the vehicle voltage is <5V, vehicle battery consumption is stopped. When the backup battery of device is depleted, the tracking function will be disconnected.
	Low External Battery	Vehicle battery voltage is between 5V to 10V. It is an indicate that the vehicle battery is low.
	External Power Supply	Power is supplied to the device.
	External Power Disconnection	Power supply has been disconnected from the device.
	Enter Fence	The vehicle enters the defined area set by user.
	Leave Fence	The vehicle leaves the defined area set by user.
Speeding	Speeding Start	Vehicle speed exceeds value set. Default is 120km/hr for 10 seconds.
	Speeding End	Vehicle speed is below value set after speeding is detected.
Light Sensor	Theft Prevention	The light sensor is detected the light.

WIRING DIAGRAM



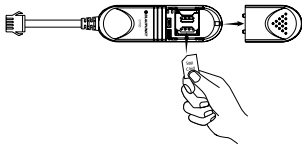
TROUBLESHOOTING

If any of the following problem occur, please resort to Troubleshooting for the possible solutions. Consult Blaupunkt authorized dealer if problem persist.

Problems	Possible Causes	Solutions
Weak or no GPS signal	GPS tracking device is not positioned properly	Check the installation location of the device. Ensure it is not being shielded by metal.
The device is not responding to SMS commands	SIM card has run out of credit.	Top up the SIM card.
	Improper installation of SIM card.	Check whether the SIM card has been slotted correctly.
		Check that the SMS command.

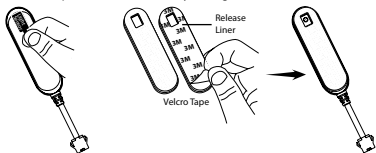
OPERATION INSTRUCTION

1. Remove device cover and insert the SIM card into the SIM card slot and close back the device.
(Ensure the SIM card has Internet access)

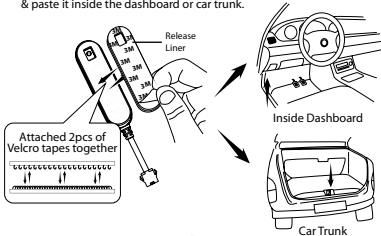


2. Installation steps :

- a. Tear off the Light Sensor tape.
- b. Label one of the Velcro tape on the back of device by tearing off the release liner.



- c. Attached 2pcs of Velcro tapes together. Then, tear off the release liner & paste it inside the dashboard or car trunk.



5

DIFFERENT SCENARIO

Indicator of GSM and GPS

System	Indicator Light	Status	Meaning
GSM	Red	Fast Flash	GSM initialising
		Slow Flash	Normal GSM signal
		Long Bright	GPRS online
		No Light	No GSM signal/ No SIM card
GPS	Yellow	Fast Flash	Searching for GPS signal
		Long Bright	Normal GPS signal
		No Light	No GPS signal/GPS not working

SOFTWARE OPERATION

Mobile Application



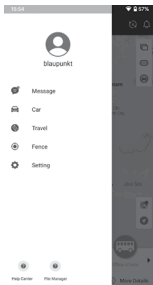
Search "Blaupunkt Tracker" on Google Play Store or iOS App Store to download the App.

Home Page

- 1.0 Click on the menu button
- 2.0 Click to enter tracking interface.

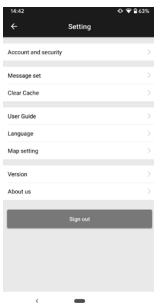


1.0 Menu



6

1.1 Setting

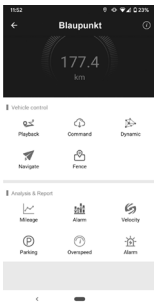


2.0 Tracking

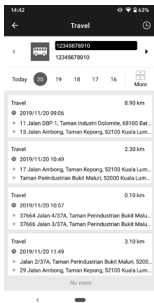
- Click to enter tracking details interface.



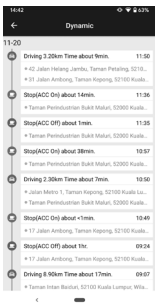
2.1 Tracking Details



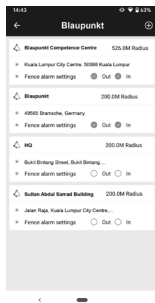
2.1.1 Playback



2.1.2 Dynamic



2.1.3 Fence



2.1.4 Mileage Analysis & Report



2.1.5 Velocity Analysis & Report

