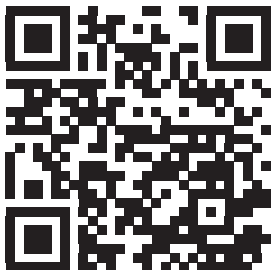




DUAL VOICE COIL
SHALLOW WOOFER
GTW 21004 D



Enjoy it.



INTRODUCTION

Proper system planning is vital in order to maximize the device's performance and road safety. Plan your installation carefully to avoid compromising performance reliability of the system. Consult an authorized Blaupunkt dealer for installation or reparation. Read the manual carefully before operating the device for the first time.

Safety Notes

Ensure to follow below safety notes during installation and wiring connection :-

- Disconnect the negative terminal of the battery. Refer to the safety notes of vehicle manufacturer.
- Ensure positions of the holes are nowhere near the vehicle component to avoid any damage during drilling.
- Ensure cross section of the cable is no less than 2.5mm² if the positive and negative cables are too long.
- Incorrect installation may result in malfunction of the device or the car sound system.

Installation and Connection Instructions

- Select a dry and well-ventilated location to install the device.
- The device must not be installed in overly exposed location such on the rear shelf, rear seat etc.
- The installation location must be suitable for screw holes and have stable ground support.

Disclaimer

- In no event shall Blaupunkt be liable for any direct, indirect, punitive, incidental, special consequential damages, to property or life, improper storage, whatsoever arising out of or connected with the use or misuse of our products.
- USA & CANADA : Product not intended for sale in the United States and Canada. If purchased in the U.S. or Canada, this product is purchased as-is. No warranty, express or implied is provided in the U.S. and Canada.

Voltage Supply

- Use the supplied power extension cable to connect to the positive battery terminal.
- Firmly and carefully connect the ground lead to a bare metal point on the vehicle chassis.
- The control of the device should be a two-channel control, either via the preamplifier outputs or the loudspeaker, output of the car sound system.
- A control solely via the right or left channel is also possible since the low-frequency portion of the music is generally identical on both channels.

Integrated Fuse

The integrated fuse in the device protects the output voltage and the entire electrical system in case of malfunction. Do not replace damaged fuse with higher current.

Switching On/Off

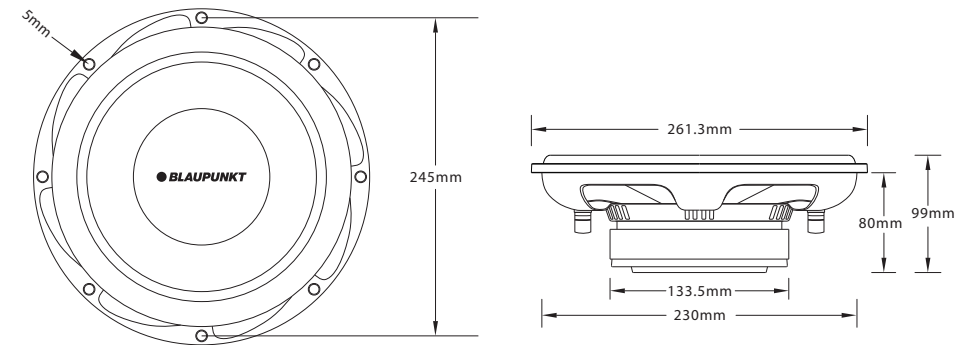
This device will automatically turn on if a music signal is detected. The device will also automatically turn off if no music signal is received.

Recycling and Disposal



Please dispose responsibly.
Subject to change.

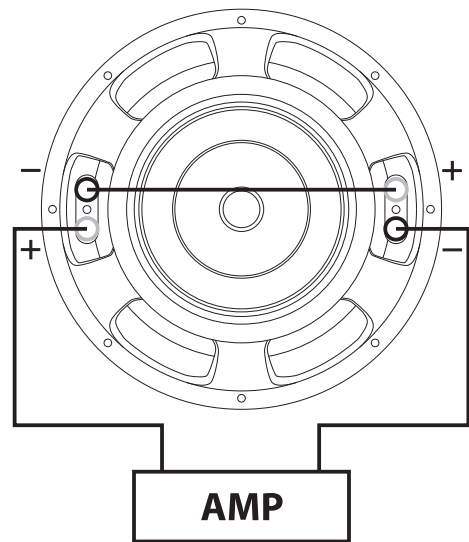
SPECIFICATION



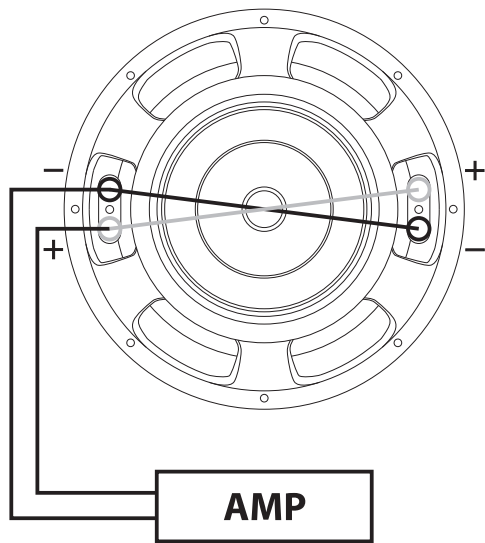
Speaker Size : 10 Inch
Speaker Diameter : 250mm
RMS Power Handling : 250W
Max. Power Handling : 500W
Impedance : 4 ohms + 4 ohms
Sensitivity : 83dB @ 1W/1m
Frequency Response : 39Hz-1.2kHz
Voice Coil Diameter : 49.55mm
DC Resistance : 3.6 ohms + 3.6 ohms
Resonant Frequency : 39Hz
Mechanical Q (Qms) : 4.069
Electromagnetic Q (Qes) : 2.19
Total Q (Qts) : 0.955
Diaphragm Mass Inc. Airload : 116.2g
Mechanical Compliance Of Suspension : 142m/N
Surface Area Of Cone (Sd) : 36.64cm
BL Product : 6.94
Compliance Equivalent Volume : 27L
Cone / Diaphragm Material : Composite Honeycomb Paper
Surround Material : NBR
Voice Coil Wire Material : SV
Voice Coil Former : Black Aluminum
Basket/Frame Material : Steel
Magnet Material : Ferrite
Dust Cap Material : Composite Paper
Spider Material : CONEX
Baffle Cutout Diameter : 218mm
#Mounting Holes : 8
Weight : 3.56kg

WIRING DIAGRAM

First Connection : Series Connection

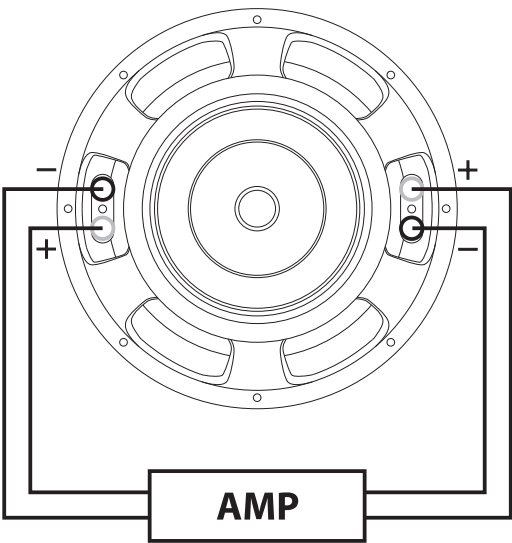


Second Connection : Parellel Connection



WIRING DIAGRAM

Third Connection : Separate Connection



TROUBLESHOOTING

If any of the following problems occur, please resort to Troubleshooting for the possible solutions. Consult Blaupunkt authorized dealer if problem persist.

Problems	Possible Causes	Solutions
Speaker does not work	Incorrect or loose wiring connection.	Ensure proper wiring connections of speaker.
	Fraying or broken cables.	Repair or replace if the cables are damaged.
	Speaker is damaged.	Replace with a new speaker.
Distorted and hissing sound	Voice coil or speaker cone is damaged.	Replace with a new speaker.