



## USER MANUAL FOR SMART LED STRIP



### Product Overview

- 1.Built-in MEMS microphone, real-time acquisition of music and environmental sound intensity.
- 2.LED Strip Light sync to music , contains a variety of musical rhythm modes.
- 3.Infrared Remote Controller Control(Optional).
- 4.Press key to switch color and mode.
- 5.Control by SmartLife APP.
6. Works with Amazon alexa and Google home and so on.

### Product Parameter

Model Number	HX300P
Category	LED Controller
Domination Principle	WiFi
APP	SmartLife
Language	Chinese、English
Operation Platform	Android4.0 or IOS9.0orhigher
Sound Sensor	MEMS MIC
LED Drive Type	Constant voltage: MOSFET
Channels	3
Input Voltage	DC (4.5-24)V
Max Output Power	144W
Work For	LED Strip or other constant voltage lights
Connect Method	Common Anode
IP Rating	IP20
Control Distance	Visible distance 30M

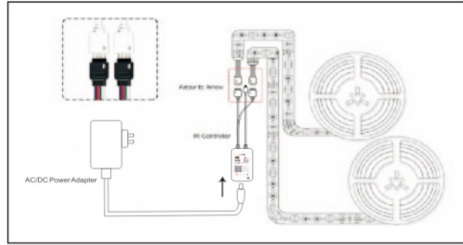


### Key Instruction:



- ① built-in microphone, the lights strip sync with any sound sources.
- ② the lights strip can sync with music.
- ③ turn on/off the led strip lights.
- ④ switch colors and different light mode.

### Cutting & Connectors Application:



### Software Manual

#### Download and Install App

Use your phone to scan the QR code below or search"Smart Life" in application marker to Download and install the App

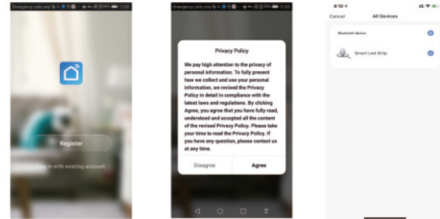


### Register/Login/Forget password

Register:Register your account to the following tips before using at the first time.If you have an account,please enter the password to login directly.

Login:Input the correct account number and password to login.

Forgert your password:You can enter the login page to retrieve your password.



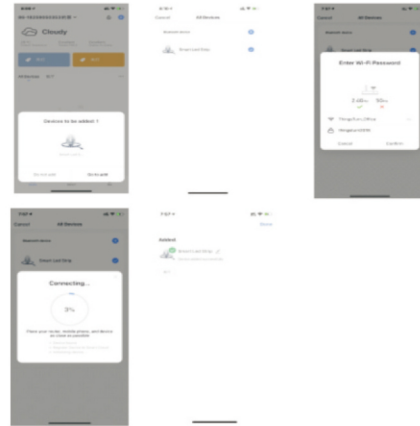
### Add Device-Normal mode

In the main application page,please wait a moment will Pop up BLE Device,then click "Go to add",click the Bluetooth device",as shown below.

In normal mode,please confirm that the device red light is quickly blink and then into the next step.

**Note:**  
If the light is not flash, press the "mode" key of the controller with 5-10 seconds to keep the red light in the quickly blink for searching & connecting network.

If you don't want to open your Phone BLE,please go to [Add Device EasyConfig mode](#) or [Add Device-AP mode](#).

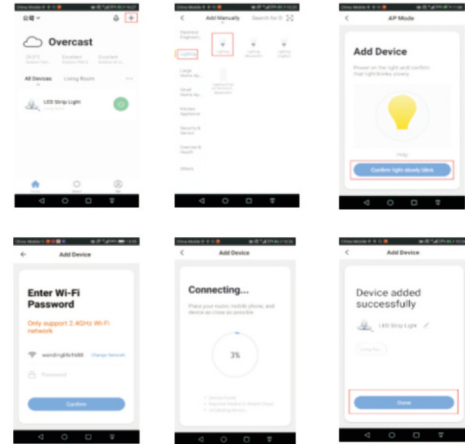


### Add Device-EasyConfig mode

In the main application page,click on the top right corner "+" to next window page and then choose Lighting,as shown below. In normal mode,please confirm that the device red light is quickly blink and then into the next step.

**Note:**  
If the light is not flash, please power on your device, and then power off (repeat 3 times),until the red light will quickly blink , also you can long press the "ON" button of the infrared remote contro5-10seconds until the red light will quickly blink.

If add the device in Normal mode fails many times,please go to [Add Device-AP mode](#)



### Add Device-AP mode

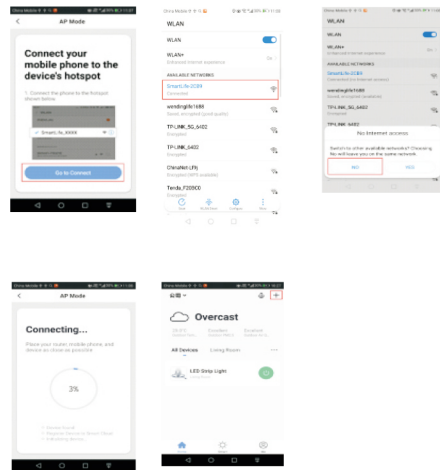
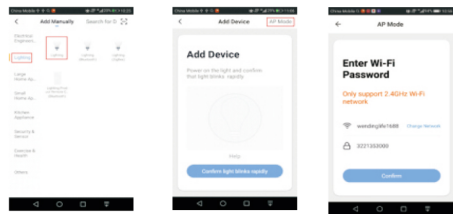
In the main application page,click on the top right corner "+" to next window page and then choose Lighting,as shown below.

In normal mode, click on the top right corner "AP Mode" to AP Mode window page.

In AP Mode,please confirm that the device red light is slowly blink and then into the next step.

**Note:**  
If the light in quickly blink,just press the controller with 5-10 seconds again,and the red light will slowly blink.

If the light neither slowly blink nor quickly blink.First press the "mode" key of the controller with 5-10 seconds to keep the red light in the quickly blink ,Second release the button and then press the controller with 5-10 seconds again,the red light will slowly blink.



### Control device

After successfully connecting the devices,the related smart device will be shown on the home page.Tap to enter its control page.

- Note:**
- 1.when device is online,it supports quick operations.
  - 2.when device is offline, it displays "Offline".and can not be controlled.

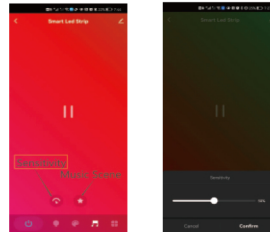


### LED Strip Light Sync to Music Function

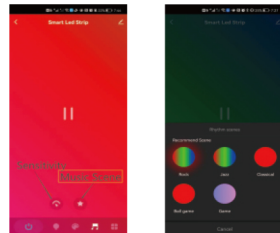
Enter music mode and play music with any device,and the led strip light will sync to music

**Note:**  
The volume of mobile phone is relatively small, it's better to use Bluetooth audio

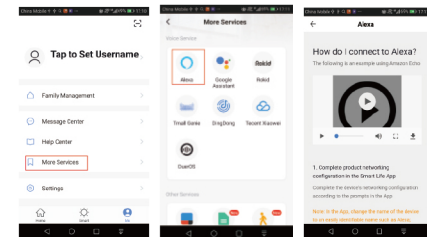
- 1.Click the "Sensitivity" button , you can adjust the sensitivity according to the volume of your voice.



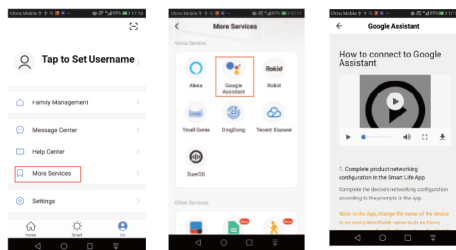
- 2.Click the "Music Scene" , you can choose the mode you want, like Rock/Jazz/Classical/Ball game/Game.



### Works with Amazon Alexa

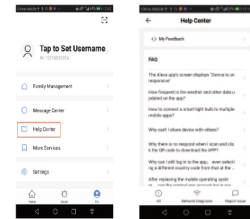


### Works with Google Assistant



### FAQ

- 1.How to reset the controller?  
Press the "mode" key of the controller with 5-10 seconds
- 2.How to get more help?



### Attentions

1. Please use the product in a dry environment.
2. Please use the input voltage at 4.5-24V DC voltage, must not connect into 220V AC directly.
3. The product is requested common anode connection. The wrong connection will cause a malfunction.
- 4.In the process of the product and software upgrade,the data and software interface listed in the text are only for description and reference.No further notify will given if there is any change.

### Customer service

If you have any question after receiving the products,please contact our customer service, we will reply to you within 24 hou.